

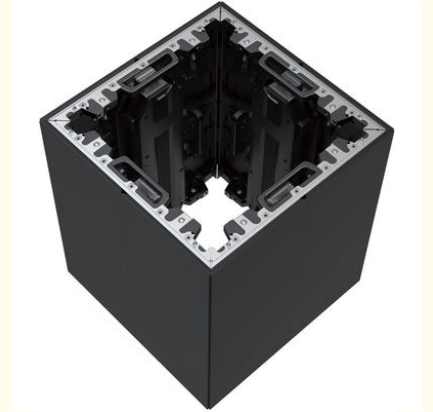
P1.875 Small Pixel Pitch Outdoor Led Screen 480*540mm Seamless Display COB Flip Chip For Meeting Room

Our Product Introduction

for more products please visit us on hdled-display.com

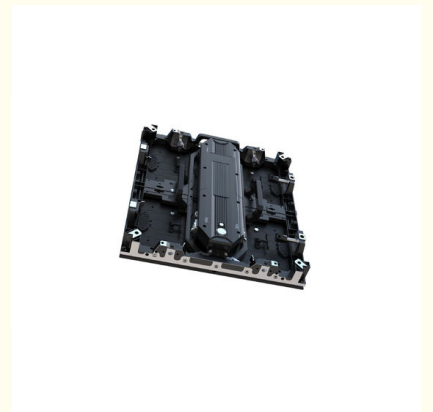
Basic Information

- Place of Origin: China
- Brand Name: Vegoo
- Certification: CE,FCC,RoHS
- Model Number: VG-P1.875
- Minimum Order Quantity: 1sqm
- Price: 1115-1250USD/sqm
- Packaging Details: Plywood case / Flight case / Carton box
- Delivery Time: 10-20 days
- Payment Terms: T/T
- Supply Ability: 8000 Sqm/month



Product Specification

- Application: Outdoor
- Weight Per Panel: 9.5kg/panel
- Pixel Pitch: 1.5mm
- Panel Size: 480*540mm
- Module Size: 240*270mm
- Cabinet Material: Aluminum
- Brightness: >3500nits
- Refresh Rate: 1920-3840HZ
- Highlight: **Meeting Room Outdoor Led Screen ,
Seamless Display Outdoor Led Screen ,
P1.875 Small Pixel Pitch Led Screen**



Product Description

P1.5 Small Pixel Pitch HD Led Screen 480*540mm Aluminum Die-Casting Cabinet COB Flip Chip For Conference Room

Applications

Broadcast Studios: Ideal for newsrooms and studios where high-resolution displays are crucial for clear visuals.

Control Rooms: Used in security and monitoring centers for real-time data display.

Retail Environments: Effective for digital signage and advertising in high-end retail spaces.

Corporate Settings: Suitable for presentations and video conferencing, providing crisp visuals for meetings.

Key Features

90 degree corner sharp,45 degree cut module & cabinet to be smallest corner ga

The thinnest outdoor fine pitch LED with 90° connection

Die-cast module for high precision alignment

Product Name	240*270mm Module			
	P1.25	P1.5	P1.875	P2.5
Physical Pitch	P1.25	P1.5	P1.875	P2.5
Pixel Density ()	640000pixels/m ²	444,444pixels/m ²	284,444pixels/m ²	160,000pixels/m ²
Pixel Density (Panel)	165888pixels/panel	115,200pixels/panel	73,728pixels/panel	41,472pixels/panel
LED Module Dimensions (mm)	240× 270	240× 270	240×270	240×270
Scan method	1/36	1/30	1/24	1/18
Panel Dimensions (W × H × D) (mm)	480 × 540 ×70	480 × 540 ×70	480 × 540 ×70	480 × 540 ×70
No. of Modules Per Panel (W × H)	2×2	2×2	2 × 2	2 ×2
Physical Resolution of Module (W × H)	192 × 216	160 × 180	128 × 144	96 × 108
Physical Resolution of Panel (W × H)	384 × 432	320 × 360	256 × 288	192 × 216
Weight Per Panel	9.5kg/panel	9.5kg/panel	9.5kg/panel	9.5kg/panel
Weight/	36.6kg/m ²	36.6kg/m ²	36.6kg/m ²	36.6kg/m ²
Cabinet Material	Aluminum	Aluminum	Aluminum	Aluminum
Servicing	Front and Rear	Front and Rear	Front and Rear	Front and Rear
IP Rating	Front IP 65, Back IP54	Front IP 65, Back IP54	Front IP 65, Back IP54	Front IP 65, Back IP54
Brightness (after Cal.)	>3500nits	>4000nits	>4000nits	>3500nits
Refresh Rate	1920-3840HZ	1920-3840HZ	1920-3840HZ	1920-3840HZ
Horizontal Viewing Angle	160°	160°	160°	160°
Vertical Viewing Angle	160°	160°	160°	160°
Color temperature	/	/	/	/
- Default	8000K±500K	8000K±500K	8000K±500K	8000K±500K
-Adjustable range	3500~12,000K	3500~12,000K	3500~12,000K	3500~12,000K
Processing	14bit	14bit	14 bit	14 bit
Colours	281 trillion	281 trillion	281 trillion	281 trillion
Contrast Ratio	4,000 : 1	4,000 : 1	4,000 : 1	4,000 : 1
Average Power Consumption	216w/m ²	216w/m ²	216 w/m ²	216 w/m ²
Max Power Consumption	720 w/m ²	720 w/m ²	720 w/m ²	720 w/m ²
Operating Temp/Humidity	-20 ~ 50 °C/ 10% ~ 90%	-20 ~ 50 °C/ 10% ~ 90%	-20 ~ 50 °C/ 10% ~ 90%	-20 ~ 50 °C/ 10% ~ 90%
Storage Temp/Humidity	-30 ~ 60 °C/ 10% ~ 95%	-30 ~ 60 °C/ 10% ~ 95%	-30 ~ 60 °C/ 10% ~ 95%	-30 ~ 60 °C/ 10% ~ 95%
Expected LED Lifetime (Max)	100,000 Hrs	100,000 Hrs	100,000 Hrs	100,000 Hrs





FAQ

- 1. How can i place an order?** Please provide the details of your requirements as clear as possible. So we can send you the offer at the first time. For designing or further discussion, it is better to contact us with WhatsApp/email /phone, in case of any delays.
- 2. What kind of display do we provide?** We have indoor/outdoor/mobile LED /rental LED display /LED stage/ LED module/Advertising LED display for you choose.
- 3. What about the lead time for an order?** Always: 10-17 days, as your order quantity, sometimes we have stock, can delivery within 7 days
- 4. What about the warranty?** We have Three years quality guaranteed, spare parts such as led module, receiving card, control card, power supply are damaged not cause of artificial damaged, then it's free maintenance and ship back new ones for replacement.
- 5.How about the quality?** Our led products must be testing of at least 72hours before shipping, from purchase raw materials to ship ,Each step has strict quality control systems to ensure led display with good quality



Shenzhen Weigu Electronic Technology Co., Ltd.

☎ 86-15118043086

✉ Linda@vegooled.com

🌐 hdled-display.com

806 Building 1 Geya Technology Building, Clock Base, Ma Tou community, Ma Tian Street, Guangming District, Shenzhen, China