



Wall-mounted Fixed Advertising LED Display with 960 x 960mm Cabinet Size and Full Color

Our Product Introduction

for more products please visit us on hdled-display.com

Basic Information

- Place of Origin: China
- Brand Name: Vegoo
- Certification: CE
- Model Number: VG-P10-D
- Minimum Order Quantity: 1sqm
- Price: 490USD
- Packaging Details: Plywood case / Flight case / Carton box
- Delivery Time: 10-20 days
- Payment Terms: T/T
- Supply Ability: 5000 Sqm/month

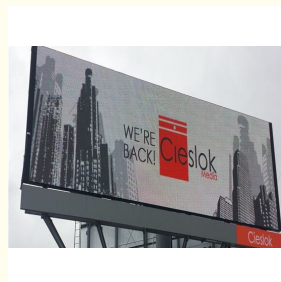
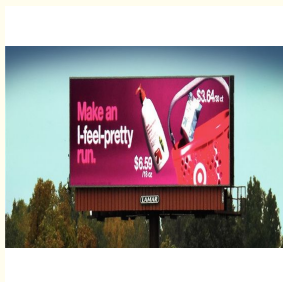


Product Specification

- Color: Full Color
- Pixel Pitch: 6mm, 8mm, 10mm
- Module Size: 320*160mm
- LED Type: SMD3535
- Highlight: Full Color Wall-mounted LED Display, Fixed Advertising Wall-mounted LED Display



More Images



Product Description

P5,P6,P8 and P10 Outdoor led billboard display Features:

- 1.Competitive advantage in outdoor SMD design:
For DIP LED display, it has only 70° view angle. For SMD LED display, it has bigger view of 120°
- 2.Flexible design for both front and rear service:
There are both front and rear service for optional. Modules, power and cards can be take out from front or back.
- 3.If the brightness can be automatically adjustable, it can save quite a lot of power. Besides, this can successfully avoid light pollution in the evening, which is for drivers and traffic.
- 4.More than 10000 nits high brightness makes it possible to be viewed even the LED displays face the direct sun!
- 5.Anti low temperature:
suitable for winter and cold areas like North European countries and Russia.

Detailed Images

| Pixel pitch | P6mm | P8mm | P10mm |
|------------------------|-----------------|-----------|-----------|
| Pixel density(dots/m²) | 27777 | 15625 | 10000 |
| Module size(mm) | 192*192mm | 320*160mm | 320*160mm |
| Brightness | 7500 nits | 7500nits | 7500 nits |
| Grey scale | 14~16 bit | 14~16 bit | 14~16 bit |
| LED lamp | SMD3535/SMD2727 | SMD3535 | SMD3535 |
| Cabinet size(mm) | 960*960mm | 960*960mm | 960*960mm |

Q1:How to choose a led display?

A: You should consider 3 simple questions when you choose a led screen by yourself.

1. What's the environment- indoor or outdoor ?
2. Is it for rental use (need to be moved from one place to another place frequently) or for fixed installation (to be installed in a place permanently)?
3. what is the approximate size of the led screen you would like to purchase?

Q2:Which pixel pitch should i choose?

A: There's a range of pixel pitch from 1.25~30mm, there is a roughly principle-usually small pixel(1.25mm-10mm) used for indoor led screen, bigger pixel (10mm-30mm) used for outdoor led screen(for example huge advertisement billboard on a big building).

Q3:Which control system should i choose?

A:There are two kind of control systems on the market-synchronous and asynchronous control system, And for big size led screen(usually more than 20sqm) need to use synchronous control system, below 20sqm it's up to you to use syn or asyn. But asyn control system's refresh rate is much lower than sync control system and which you can use wifi, 3G, 4G etc wireless to control.

Q4:How to order from us?

A: You can place an order by Alibaba online or to our company directly offline, before place an order please confirm with us for every deta.

Q5:How to pay?

A: We accept payment online through Alibaba, or offline to our company account by T/T,LC, western union.

Q6:How to ship?

A: It is optional and we respect customer's choice. You can choose to ship by air cargo, by DHL(Fedex, UPS etc) international express company, or by sea according to your goods weight and volume and the delivery time you need.

Q7:How to install it after received?

A: We will offer you the drawing to guide you for installation, even send our engineer to you for help if needed.



Shenzhen Weigu Electronic Technology Co., Ltd.



86-15118043086



Linda@vegooled.com



hdled-display.com

806 Building 1 Geya Technology Building, Clock Base, Ma Tou community, Ma Tian Street, Guangming District, Shenzhen, China