

Waterproof IP65 Fixed P6 LED Display Billboard

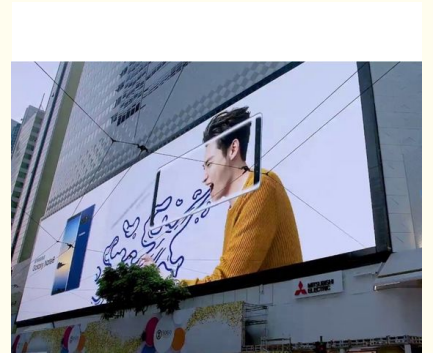
Basic Information

- Place of Origin: China
- Brand Name: Vegoo
- Certification: CE
- Model Number: VG-P6-5
- Minimum Order Quantity: 1sqm
- Packaging Details: Plywood case / Flight case / Carton box
- Delivery Time: 10-20 days
- Payment Terms: T/T
- Supply Ability: 5000 Sqm/month

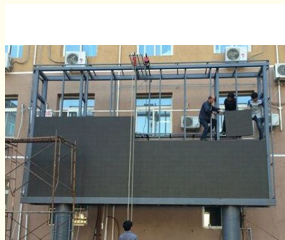


Product Specification

- LED Specification: SMD3535
- Pixel Distance: 6mm
- Module Size: 192x192mm
- Pixel Density: 27777dots
- Highlight: **IP65 outdoor led display module, P6 rgb smd led module**



More Images



Product Description

P6 Outdoor Waterproof Full color Fixed LED Display Board /Outdoor LED Advertising Screen Price

Product Feature:

1.Environmental adaptability, outdoor all-weather work

The module is fully sealed design, the module protection class reaches IP68; Cabinet protection class IP65 (front); Super anti - UV design;

Whether it is in the strong corridors or strong sun in the desert, can be durable use;

2.A number of measures to ensure uniform brightness

The choice of LED lights and chips have strict quality control, and can be equipped with bright color correction to ensure that the product brightness, color uniformity, to show you the perfect picture.

3.Display brightness adjustable

According to changes in ambient light to adjust the brightness of the display (600-800nit), to ensure that the human eye best viewing comfort and display while saving energy and environmental protection, greatly reducing your operating costs.

4.Excellent display

Horizontal viewing angle of 150 °, the effective viewing range of advertising to expand, watching better;
High refresh rate ($\geq 1000\text{Hz}$), high gray (14bits), high contrast (3000: 1), the display is delicate and soft.

Type	Parameter name	p6 outdoor LED module parameter
Module constitute	Pixel structure	Table three LED
	LED specification	SMD3535
	Pixel composing	1R1G1B
	Pixel distance	6mm
	Module resolution	32x32dots
	Moudle size	192x192mm
	Pixel density	27777dots
	Peak power consumption	27.5w
Cabinet parameter	Moudle weight	0.389kg
	Cabinet type	Waterproof cabinet(IP65)
	Cabinet dimension	Customization
	Cabinet resolution	Customization
Optical parameter	Cabinet area	Customization
	White balance brightness	6500cd/m2
	Best visual distance	>6m
	Horizontal viewing angle	140
	Vertical viewing angle	120
	Luminance uniformity	>95%
Electrical parameter	Contrast	3000:1
	Maximum power	746w/m
	Average power	224w/m
	Input voltage	AC220V(50HZ)
Processing performance/ Operation parameter	Output voltage	DC5V
	Drive mode	1/8scan
	Frame frequency	60Hz
	Refresh rate	>1920Hz
	Control method	Synchronous
	Typcial life values	100000hrs
Working environment temperature	-10~60	

Working environment
humidity

10% 70%

Items of led display screen



Product exhibition

192mm

192mm

1 TRUE EFFECT
see clearly

It could be long-term usage in outdoor and has high clarity and high definition, which is very suitable for outdoor high density screen

2 EASY Connected bar



More steadily , more convenient and easier for installation ; flat connector is the best design for maintain service!



Application



Product Advantage

1.Light ball:

Our company adopts high quality SMD3535 , from raw material processing to encapsulation technology to quality control, we are all more trustworthy than market three without products !

2.Chip:

The solid crystal, gold wire bonding, precision testing of the leading LED packaging technology, equipping with advanced automatic production line and production equipment, the international leading quality inspection and reliability test equipment, guaranteeing the effect of chip quality LED display screen refresh rate is higher.

3.Border:

From details to ensure product quality.The frame thickness is 0.5mm above the market, which is more durable and durable.Surface level not to drop paint, work fine and more beautiful.

4.Factory strength:

Our company focus on full color LED display screen and LED technology industry production, sales and service, our company has the industry advanced, complete automatic rapid assembly lines, production capacity output high on industry.Worldwide commitment and fulfillment of user professional services and guidance.

5.High gray high brush:

The sun is still bright and bright picture, the display is natural and true, each module has been through the point brightness and chroma correction, brightness and color uniformity.

High waterproof and dustproof rating (before IP65), strong anti-seismic ability to adapt to extreme weather

Flatness: the whole screen: $\leq \pm 1$ mm patchwork between the module: ≤ 1 mm

Viewing distance: 8-200m, the display is clearly visible

Image adjustment: Contrast / tone adjustment / single mode group brightness adjustment

Our Service

1.Pre-sales service:

Our team design and make solutions based on different requirements from different customers, what you think is what we can do.

2.After-sales services:

- 1). We provide customer service through Skype, phone or email, supply you video or drawing to solve problems.
- 2). We provide remote control service through internet to achieve real time service, which will short time of solving problems.
- 3). We provide professional engineer one-to-one to keep fastly reply.

3.Installation Service:

- 1). We provide detailed CAD drawing to customer for preparing metal structure.
- 2). We could dispatch our engineer to your place , guide installation and free training.
- 3). Special designs have special solutions; we will make perfect solutions to satisfy all customers' requirements.

806 Building 1 Geya Technology Building, Clock Base, Ma Tou community, Ma Tian Street, Guangming District ,
Shenzhen, China