

Lightweight Stage Rental P2 1R1PG1B Conference Led Display

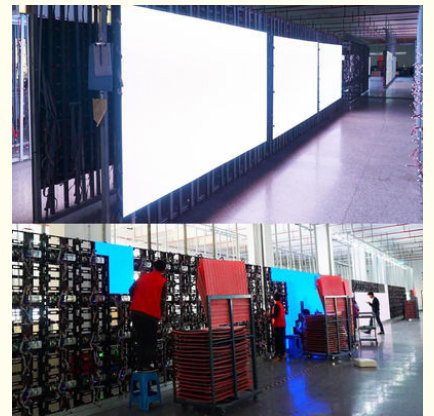
Basic Information

- Place of Origin: China
- Brand Name: Vegoo
- Certification: CE
- Model Number: VG-P2-dh2
- Minimum Order Quantity: 1sqm
- Packaging Details: Plywood case / Flight case / Carton box
- Delivery Time: 10-20 days
- Payment Terms: T/T
- Supply Ability: 5000 Sqm/month

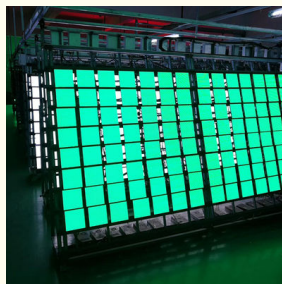
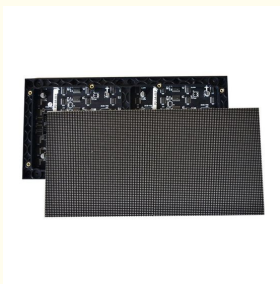


Product Specification

- Application: Indoor
- Color: Full Colour
- Pixel Pitch: 2mm
- Panel Size: 256mm X 128mm
- Highlight: **1R1PG1B conference led screen, P2 Conference Led Display, 1R1PG1B Conference Led Display**



More Images



Our Product Introduction

for more products please visit us on hdled-display.com

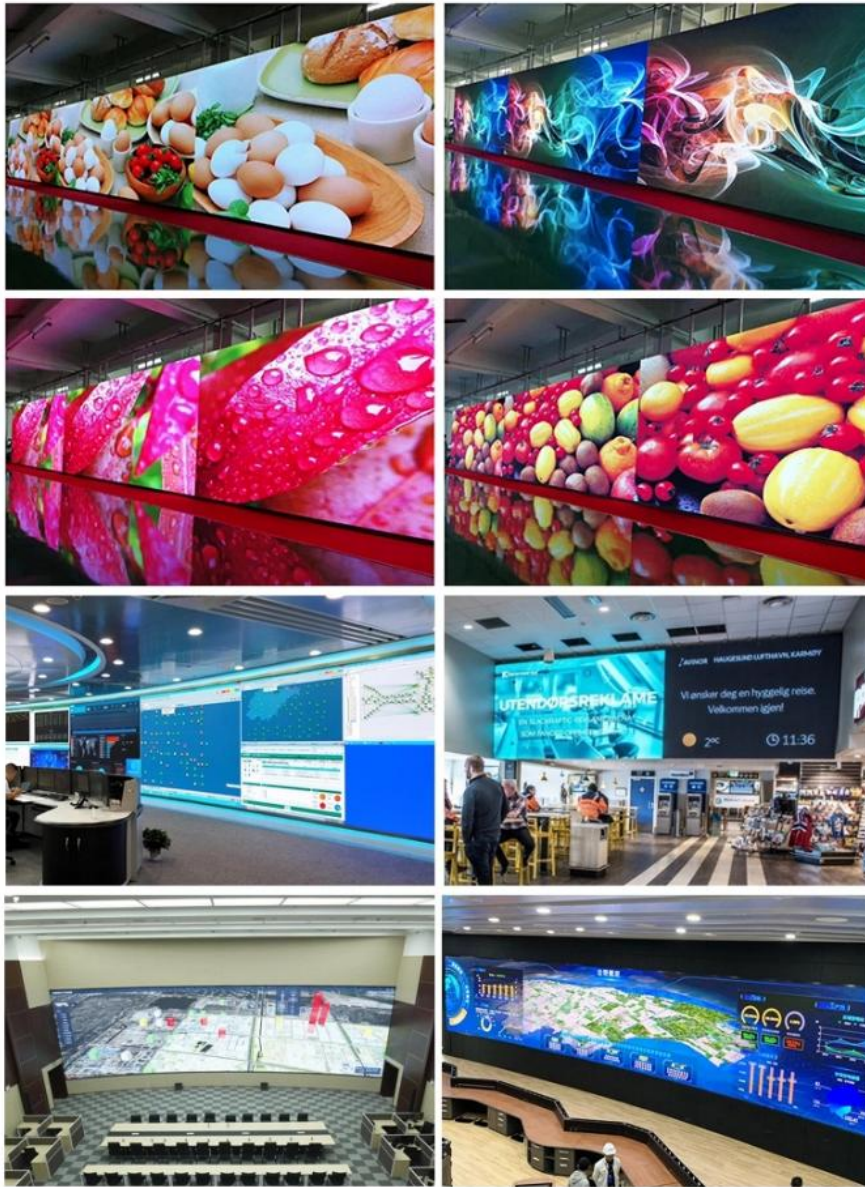
Product Description

Indoor high-definition LED display p2 led module conference led display stage rental large screen

Product Feature:

1, Seamless splicing 2, High brightness intelligent adjustable 3, High gray level better color performance 4, High contrast faster response speed high refresh frequency 5, Color reduction and naturalization

| Unit Module Specifications | | | | | | |
|---|---|---------|----------|----------|----------|----------|
| Item | P1.25 | P1.56 | P1.667 | P1.875 | P1.923 | P2 |
| Pixel Pitch | 1.25 mm | 1.56 mm | 1.667 mm | 1.875 mm | 1.923 mm | 2 mm |
| Pixel Configuration | 3in1 (1R1PG1B) | | | | | |
| Module Size(MM) | 200*150 | 200*150 | 200*150 | 240*120 | 200*150 | 256*128 |
| Module Resolution(Dots) | 160*120 | 128*96 | 120*90 | 128*64 | 104*78 | 128*64 |
| Module Weight(Kg) | 0.3 | 0.3 | 0.3 | 0.31 | 0.3 | 0.3 |
| Package LED Mode | 1010 | 1010 | 1010 | 1515 | 1515 | 1515 |
| Max Power(Watt) | 22 | 21 | 20.5 | 19 | 17.5 | 17.5 |
| Pixel Density(Dots/SQM) | 691'200 | 409'600 | 360'000 | 284'444 | 270'400 | 250'000 |
| Driving Method | Constant Current Driving | | | | | |
| Scan Method(Scan) | 1/30 | 1/32 | 1/30 | 1/32 | 1/26 | 1/32 |
| Interface Way | HUB 75 | | | | | |
| Brightness(CD/SQM) | ≥ 1200 | | | | | |
| Unit Cabinet Specifications | | | | | | |
| Cabinet Size(MM) | 400*300 | 400*300 | 400*300 | 480*480 | 400*300 | 512*512 |
| Cabinet Composing(PCS) | 4 | 4 | 4 | 8 | 4 | 8 |
| Power Supply Mode(Per Cabinet) | 5V60A | 5V60A | 5V60A | 5V60A | 5V60A | 5V60A |
| Cabinet Resolution(Dots) | 320*240 | 256*192 | 240*180 | 256*256 | 208*156 | 256*256 |
| Optimal Viewing Distance(M) | 1-100 | 1.5-150 | 1.6-160 | 1.8-180 | 1.92-200 | 1.92-200 |
| Optimal Viewing Angle | Horizontal angle: 160 degree; Vertical angle: 120 degree | | | | | |
| Environment Temperature | Storage: -40 degree ~ +85 degree; Work: -20 degree ~ +60 degree | | | | | |
| Relative Humidity | 10% ~ 95% | | | | | |
| Power Supply Specifications | | | | | | |
| Operating Voltage | AC:100V~120V AC:220~240V | | | | | |
| Average Power(W/SQM) | 150-400 | 150-380 | 150-360 | 150-350 | 150-320 | 150-330 |
| Max Power Consumption(W/SQM) | ≤ 1150 | ≤ 1050 | ≤ 1000 | ≤ 950 | ≤ 920 | ≤ 900 |
| Current | ≤ 20mA (single LED) | | | | | |
| Control System Specifications | | | | | | |
| Computer | Pentium4 or above P4 or above | | | | | |
| Operate System | Win7-11/2000/NT/XP | | | | | |
| Control Mode | Synchronization with PC | | | | | |
| Main Technical Parameter Specifications | | | | | | |
| Driving Device | Constant Current Driving | | | | | |
| Refresh Rate | ≥ 1900-3840Hz | | | | | |
| Gray/Color | RGB each 256 grade, can display 16.7color | | | | | |
| Lifespan | ≥ 100000hours | | | | | |



FAQ

1. **How can i place an order?** Please provide the details of your requirements as clear as possible. So we can send you the offer at the first time. For designing or further discussion, it is better to contact us with WhatsApp/email /phone, in case of any delays.
2. **What kind of display do we provide?** We have indoor/outdoor/mobile LED /rental LED display /LED stage/ LED module/Advertising LED display for you choose.
3. **What about the lead time for an order?** Always: 10-17 days, as your order quantity, sometimes we have stock, can delivery within 7 days
4. **What about the warranty?** We have Three years quality guaranteed, spare parts such as led module, receiving card, control card, power supply are damaged not cause of artificial damaged, then it's free maintenance and ship back new ones for replacement.
5. **How about the quality?** Our led products must be testing of at least 72hours before shipping, from purchase raw materials to ship ,Each step has strict quality control systems to ensure led display with good quality

Vegoo 威固电子 **Shenzhen Weigu Electronic Technology Co., Ltd.**

☎ 86-15118043086 ✉ Linda@vegooled.com 🌐 hdled-display.com

806 Building 1 Geya Technology Building, Clock Base, Ma Tou community, Ma Tian Street, Guangming District, Shenzhen, China