

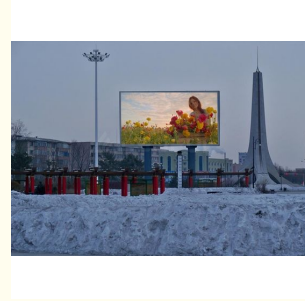
## Full color SMD outdoor p10 led display screen prices led large screen display for advertising display screen

Our Product Introduction

for more products please visit us on [hdled-display.com](http://hdled-display.com)

### Basic Information

- Place of Origin: shenzhen
- Brand Name: Vegoo
- Certification: CE
- Model Number: VG-1R1G1B/SMD3535-P10
- Minimum Order Quantity: Negotiable
- Price: negotiable
- Packaging Details: poly wooden box, flight case , carton
- Delivery Time: 7-15 days
- Payment Terms: T/T
- Supply Ability: 8000 sqm/month

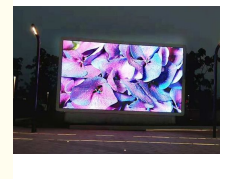
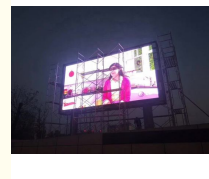
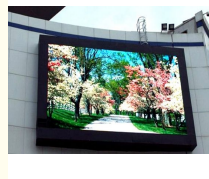


### Product Specification

- Moduel Size(LxW)mm: 320mm×160mm
- Cabinet Size(LxWxH)mm: 960mm×960mm×130mm
- Brightness: 5500CD /
- Cabinet Weight: 28kg
- Frame Frequency: 65 Hz
- Refresh Rate: >1920Hz
- Highlight: p10 outdoor led display screen, Advertising outdoor led display screen, Advertising Display Screen



### More Images



### Product Description

#### Product Features:

1. High brightness over 6500nits by using Epistar big LED chip from Taiwan.
2. High color output: 16 bit color so the video,images shown on the LED screen is very fresh and vivid. It catches the eyes of more audiences,making your advertising very effient.
3. High refresh rate over 1920HZ/S;when you take photoes or video,no scanning lines.
4. High waterproof function: IP65. Our cabinet backdoor has special cover,no need make additional frame to protect waterproof from the rear side.
5. Brightness can be automatically adjusted according to the real-time environment.
6. Front or rear maintenance option, realizing module, power supply and receiving card front or rear maintenance, saving your maintenance cost.

#### Product Description

Our Product Introduction

for more products please visit us on [hdled-display.com](http://hdled-display.com)

NO:	Product Name	Specification
1	Pixel Pitch	10mm
2	Pixel Configuration	1R1G1B/SMD3535
3	Density	10,000 pixel/m2
4	Module Size(L×W)mm	320mm×160mm
5	Cabinet Size(L×W×H)mm	960mm×960mm×130mm
6	Module Resolution	32×16
7	Cabinet Resolution	96×96
8	Driving Method	1/ 4 Scan
9	Driving IC	FM6124
10	Brightness	5500cd/
11	Contrast	6000 :1
12	Brightness Adjustment	Auto and Manual
13	Power Consumption	Max Power: 520W
14		Average power: 250W
15	Cabinet Weight	28kg
16	Color Temperature	2000K—9500K
17	Horizontal Viewing Angle	140°
18	Vertical Viewing Angle	140°
19	Signal Processing	16bit
20	Grey Processing	1024×1024×1024 16834×16834×16834
21	Control Distance	cable100m,Multimode500m,Single mode 2km
22	Frame Frequency	65 Hz
23	Refresh Rate	>1920Hz
24	Control Mode	Synchronous/Asynchronous
25	The Opposite Calibration Curve	With Eight Optional Gamma Calibration Curve
26		Users can choose the recommended curve or adjust it based on actual situation
27	MTBF	>50000 hours
28	Life Span	100,000 Hours
29	Operating Temperature	Working : -20 - 65
30		Storage : -40 - 85
31	Environment Temperature	-30 to 60 ; humidity Rh10% to 95%
32	Remote Control	Can realize remote control and send alarm signal to operators in case of logging failure (Be customized)
33	Self-checking Technique	Self-inspection, communication test, power test, temperature monitoring (Be customized)
34	Operating System Platform	WindowsNT,Windows2000,WindowsXP,Windows7
35	Power Supply	AC 110-220V/5V60Hz
36	Protection	waterproof, dustproof, high temperature pervention, anticorrosion, smoulderproof, anti-static, shockproof, lightningproof, smoke alarm and temperature alarm. (Be customized)

**P10 LED display screen aging test(at least 72 hours):**



**High performance outdoor full color SMD LED advertising screen:**



### Our Services

Pre-sale service:

1. Reply enquiries in 24 hours.
2. Market research and forecast for customer.
3. Provide unique and professional solutions based on customer's requirement.
4. Other services, such as special packing design, factory visiting and so on.

In-sale service:

1. Tracking report in producing.
2. Quality test report for every order.
3. Photos and videos as per customer's requirement.
4. Free spare parts.

After-sale service:

1. Lifetime free maintenance and upgrade.
2. Complaint respond period not exceed 24 hours; maintenance guidance and problem solution supplied in 48 hours.
3. Customer satisfaction tracking report.
4. Free technician training.
5. Full set of documents free of charge, which including installation guidance, software operation manual, easy maintenance manual

and control system software CD and so on

### FAQ

Q1. How can I place the order?

Firstly, please provide the details of your requirements as clear as possible, so we can send you the offer at the first time.

Q2. What if I don't know how to install the screen?

- a. We will provide your details drawing for installation led screen,But you need provide us on-site picture for installationplace.
- b. Training 2 people in the factory.
- c. We can send our engineers to your country to guide how to install the screen.

Q3. What if I don't know how to maintain the screen?

We will provide you the operation manual, software when you place the order and also we can remote to help you to adjust the software by teamviewer.

Q4. How to deliver the my goods?

It depends on your budget and time you need the led screen. Regularly, if the quantity is less, we suggest to deliver by air, otherwise by sea to save the costs..



Shenzhen Weigu Electronic Technology Co., Ltd.

86-15118043086

Linda@vegooled.com

hdled-display.com

806 Building 1 Geya Technology Building, Clock Base, Ma Tou community, Ma Tian Street, Guangming District, Shenzhen, China

