



## P2 Small Pitch LED Display 512x512 Cabinet 3840Hz SMD Screen For Indoor Advertising

Our Product Introduction

for more products please visit us on [hdled-display.com](http://hdled-display.com)

### Basic Information

- Place of Origin: China
- Brand Name: Vegoo
- Certification: CE/ROHS/FCC/
- Model Number: VG-HD 2.0
- Minimum Order Quantity: 1Sq.m
- Price: Negotiable
- Packaging Details: Plywood case / Flight case / Carton box
- Delivery Time: 7 to 25 working days
- Payment Terms: Western Union, T/T
- Supply Ability: 1500Sq.m/months

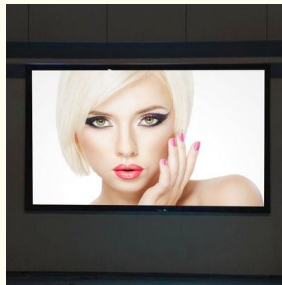


### Product Specification

- Pixel Pitch: 2.0mm
- Module Resolution: 64x64
- Driving Method: 1/32 Scan
- Lamp Beads: SMD 3IN1-1515
- Driving IC: ICN2163
- Refresh Rate: 3840Hz
- Brightness: 700cd/
- System: Nova
- Highlight: **high definition led display, high resolution led display**



### More Images



## Product Description

### 1R1G1B/SMD1515 Black lamp P2.0 Indoor Full color LED Display

#### P2 small spacing features :

**High resolution:** P2 means 250,000 pixels per square meter, which is suitable for situations where the content needs to be clearly displayed.

**Color reproduction:** Excellent color reproduction ability, can present a richer color level.

**Wide viewing Angle:** To provide a wider viewing Angle, the audience can get a good viewing experience no matter from which Angle.

**Strong applicability:** widely used in advertising, performance, conference, interior decoration and other fields.

#### Factors to consider when choosing a P2 small-pitch screen

**Viewing distance:** Determine the distance between the viewer and the screen, P2 is suitable for close viewing of 1-3 meters.

**Brightness and contrast:** Choose the right brightness and contrast based on the ambient light.

**Installation method:** Consider the installation position and method of the screen (wall hanging, hoisting, etc.).

**Maintenance costs:** Understand the cost of maintaining and replacing components to ensure long-term economic use.

#### Tips:

- 1) Reply your inquiry in 24 working hours.
- 2) Experienced staffs answer all your query in fluent English, Spanish, French, German etc
- 3) Customized design is available, OEM & ODM are welcomed.
- 4) Exclusive and unique solution can be provided to our customer by our well-trained and professional engineers and staffs.
- 5) Special discount and protection of sales area provided to our distributor.
- 6) Warmly welcome your visit our company if available.
- 7) Warranty: 24 months, a little investment for longer warranty time.

#### P2.0 Indoor Full color LED Display Specification

| NO: | Product Name             | Specification                             |
|-----|--------------------------|---|
| 1   | Pixel Pitch              | 2.0mm                                     |
| 2   | Pixel Configuration      | SMD 3IN1-1515                             |
| 3   | Density                  | 250,000 pixel/m <sup>2</sup>              |
| 4   | Module Size(L×W)mm       | 128mm×128mm                               |
| 5   | Cabinet Size(L×W×H)mm    | 512mm×512mm×90mm                          |
| 6   | Module Resolution        | 64×64                                     |
| 7   | Cabinet Resolution       | 256×256                                   |
| 8   | Driving Method           | 1/32 Scan                                 |
| 9   | Driving IC               | ICN2163                                   |
| 10  | Brightness               | 700CD/                                    |
| 11  | Contrast                 | 1000:1                                    |
| 12  | Brightness Adjustment    | Auto and Manual                           |
| 13  | Power Consumption        | Max Power: 600W                           |
| 14  |                          | Average power: 240W                       |
| 15  | Module Weight            | 0.21kg                                    |
| 16  | Color Temperature        | 6000K—9000K                               |
| 17  | Horizontal Viewing Angle | 140°                                      |
| 18  | Vertical Viewing Angle   | 120°                                      |
| 19  | Signal Processing        | 16bit                                     |
| 20  | Grey Processing          | 1024×1024×1024<br>16834×16834×16834       |
| 21  | Control Distance         | cable100m, Multimode500m, Single mode 2km |
| 22  | Frame Frequency          | 65 Hz                                     |
| 23  | Refresh Rate             | >3840Hz                                   |

|    |                                |  |
|----|--------------------------------|--|
| 24 | Control Mode                   | Synchronous/Asynchronous   |
| 25 | The Opposite Calibration Curve | With Eight Optional Gamma Calibration Curve  |
| 26 |                                | Users can choose the recommended curve or adjust it based on actual situation                            |
| 27 | MTBF                           | >50000 hours   |
| 28 | Life Span                      | 100,000 Hours  |
| 29 | Operating Temperature          | Working : -20 - 65   |
| 30 |                                | Storage : -40 - 85   |
| 31 | Environment Temperature        | -30 to 60 ; humidity Rh10% to 95%  |
| 32 | Remote Control                 | Can realize remote control and send alarm signal to operators in case of logging failure (Be customized) |
| 33 | Self-checking Technique        | Self-inspection, communication test, power test, temperature monitoring (Be customized)                  |
| 34 | Operating System Platform      | WindowsNT,Windows2000,WindowsXP,Windows7   |
| 35 | Power Supply                   | AC 110-220V  |
| 36 | Protection                     | IP 67  |



#### Customer Service

- 1) Guarantee Time: Within two years after delivery form factory
- 2) Maintenance Coverage : LED modules,Power supply ,Control system and other accessories ( This warranty exclude accessories purchasing form other factory )
- 3) Maintenance Mode :By returned maintenance , through express or by other way
- 4) Response time for maintenance :
  1. Return mode: after receiving the returned products, we will repaired them within 24 hours and send them back to the user;
  2. Telephone or internet mode: we will contact user within 2 hours after getting informations and give solution within 8 hours;
  3. On-site mode: ( only for user inside china ) after receiving maintenance request , we will respond within 48 hours to user in Guangdong province; 72 hours to user outside Guangdong province, In the case of some special conditions , problems could be solved on the basis of friendly negotiation between two parties.



**Shenzhen Weigu Electronic Technology Co., Ltd.**



86-15118043086



Linda@vegooled.com



hdled-display.com

806 Building 1 Geya Technology Building, Clock Base, Ma Tou community, Ma Tian Street, Guangming District ,  
Shenzhen, China