

## P4mm Indoor Full Color LED Display Broken Resistant 512mm×512mm×90mm

Our Product Introduction

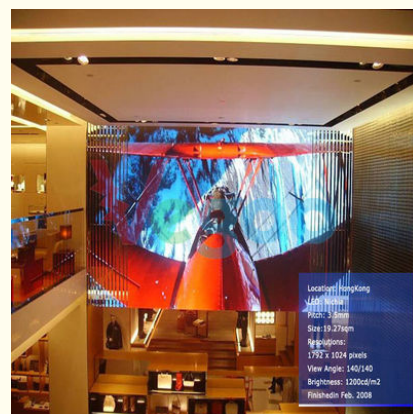
### Basic Information

- Place of Origin: China
- Brand Name: Vegoo
- Certification: CE/ROHS/FCC/
- Model Number: VG-FD 3
- Minimum Order Quantity: 1 Sq.m
- Packaging Details: Plywood case / Flight case / Carton box
- Delivery Time: 15 working days
- Supply Ability: 3000 Sq.m / month



### Product Specification

- Product Name: P4 Indoor Full Color LED Display
- Certification: CE/ROHS/FCC
- Pixel Pitch: 4mm
- Pixel Configuration: 1R1G1B/SMD2121 Black Lamp
- Density: 62,500 Pixel/m<sup>2</sup>
- Module Size(L×W)mm: 256mm×128mm
- Brightness: 1000cd/
- Contrast: 1000:1
- Highlight: indoor advertising led display,  
indoor full color led display screen



for more products please visit us on [hdled-display.com](http://hdled-display.com)

## Product Description

### broken-resistant P4 Indoor Full color LED Display 512mm×512mm×90mm

#### Description:

- Display video, vivid and no flashing, to achieve live broadcast.
- Display VCD, DVD and LD, etc, to satisfy the basic demand of recreational activities.
- Multi-format documents are available, such as AVI, MOV, MPG, DAT & VOB
- Brightness, contrast and saturation level is adjusted by software in the range of 256 levels.
- Three kinds of display modes are provided: VGA VIDE, Video, and VGA.
- It supplies Video compression control function.
- LED Display displays synchronously.

The strongest: anti-striking, broken-resistant, and safe with special materials of macromolecule.

Wireless: displaying, driving and receiving are integrated to simplify the complex inner structure, improving its safety and stability.

Wide view angle: the perfect image can be enjoyed from any direction within the range of 140°

Fastly heat dissipation: adopt the most advanced heat conducting technology, realizing the design of fan free, totally mute voice, high efficiency in heat dissipation.

#### P4 Indoor Full color LED Display Specification:

Product Name	Specification
Pixel Pitch	4mm
Pixel Configuration	1R1G1B/SMD2121 Black lamp
Density	62,500 pixel/m <sup>2</sup>
Module Size(L×W)mm	256mm×128mm
Cabinet Size(L×W×H)mm	512mm×512mm×90mm
Module Resolution	64×32
Cabinet Resolution	128×128
Driving Method	1/16 Scan
Driving IC	MBI5124 or ICN 2038S
Brightness	1000cd/
Contrast	1000:1
Brightness Adjustment	Auto and Manual
Power Consumption	Max Power: 610W
	Average power: 240W
Module Weight	0.2kg
Color Temperature	9500K—11500K
Horizontal Viewing Angle	140°
Vertical Viewing Angle	140°
Signal Processing	10 or 14bit
Grey Processing	1024×1024×1024 16834×16834×16834
Control Distance	cable100m,Multimode500m,Single mode 2km
Frame Frequency	65 Hz
Refresh Rate	>1920Hz
Control Mode	Synchronous/Asynchronous
The Opposite Calibration Curve	With Eight Optional Gamma Calibration Curve
	Users can choose the recommended curve or adjust it based on actual situation
MTBF	>50000 hours
Life Span	100,000 Hours
Operating Temperature	Working : -20 - 65
	Storage : -40 - 85
Environment Temperature	-30 to 60 ; humidity Rh10% to 95%
Remote Control	Can realize remote control and send alarm signal to operators in case of logging failure (Be customized)

Self-checking Technique	Self-inspection, communication test, power test, temperature monitoring (Be customized)
Operating System Platform	WindowsNT,Windows2000,WindowsXP,Windows7
Power Supply	AC 110–220V

### Protection

dustproof, high temperature pervention, anticorrosion, smoulderproof, anti-static, shockproof, lightningproof, smoke alarm and temperature alarm. (Be customized)

### The Selection of led

Red,Green and Blue light emitting diode (LED) lamps should be the same grade, height and wavelength on the same displayThe height or Red ,Green and Blue light from light emitting diode(LED ) lamps at the proportion of R:G:B=3:6:1The chips were imported from Optotech Cree/ Nichia are adopted;Adopted automation solid crystal,light split,bonding wire,bagging;

### Reliability Test

In order to avoid the potential defects caused in the design and production , we conduct a series of reliability test such as the electronic performance test for the semi-finished products , the anti dust test, the waterproof test , the anticorrosion test( salty spraying test ), the vibration test and thermal shock tester etc. The reliability test for the semi-finished products: Before gluing semi-finished modules , more than 48 hours aging should be made in the high temperature for all the modules , After QC inspection ok then can package itThe reliability test for the finished products.: After assembling finished modules to the led cabinets and simulating the assembly for the whole cabinets , we keep them aging for more than 72 hours , if no defects found , then we will delivery goods to our customers .The waterproof test : During the rainy seasons , the waterproof performance for the outdoor led display is quite important. the performs high-press water spraying as well as against the front cabinet to ensure, if waterproof test in good conditions , therefore , protection rate can reach IP65The anti corrosion test : In order to ensure the reliability of anti corrosion of the PCB and cabinet , hence the salty spraying test must be made during the productions Vibration test : For different kind of screens , in order to ensure the reliability of transportation and moving , therefore , the simulated vibration test must be conducted .The environment test : The real outdoor environment can ensure the effects of display in factory are the same as the spot effects



Shenzhen Weigu Electronic Technology Co., Ltd.



86-15118043086



Linda@vegooled.com



hdled-display.com

806 Building 1 Geya Technology Building, Clock Base, Ma Tou community, Ma Tian Street, Guangming District ,

